



SEMIGIUNTI DENTATI
SPLINED COUPLINGS
KUPPLUNGSNABEN



Prima di iniziare
l'utilizzo, leggere
attentamente i
documenti INFORMAZIONI
SULLA SICUREZZA e PARTE
TECNICA INTRODUTTIVA



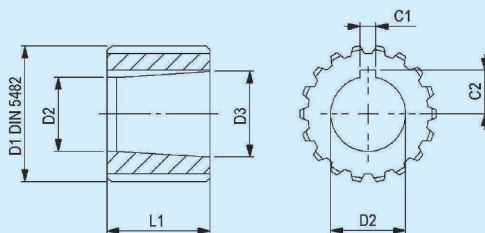
*Before using,
carefully read
the documents*
**SAFETY INFORMATION
and INTRODUCTION**



Lesen Sie vor dem
Beginn aufmerksam
die Dokumente
INFORMATIONEN
ZUR SICHERHEIT und
TECHNISCHE EINLEITUNG

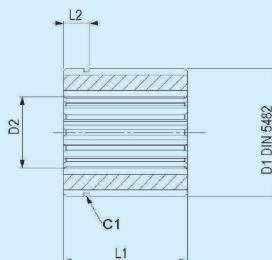
SEMIGIUNTI DENTATI SPLINED COUPLINGS KUPPLUNGSNABEN

PER POMPE UNIFICATE AD INGRANAGGI
FOR UNIFIED PUMPS
FÜR NORM-ZAHNRADPUMPEN



CODICE CODE BEST. NR	TIPO TYPE TYP	N° DENTI TEETH N° N° ZAHNEZ.	D1	D2 mm		D3 mm	C1 mm	C2 mm	L1 mm	POMPE PUMP PUMPE
2002.001.042	S1A1/SU	14	25X22	7.78	1.8	9.6	2.4	5.7	14.5	GP 1
2002.002.042	S2A1/SP1	14	25X22	14.3	1.8	17.1	4	9.1	22.5	GP 2
2002.003.042		14	25X22	14.3	1.8	17.1	3.17	9.5	22	GP 2
2002.008.042	S2A1/SP2	18	35X31	14.3	1.8	17	4	9.7	22	GP 2
2002.005.042	S3A1/SP2	18	35X31	18.6	1.8	21.9	4	12.5	26	GP 3
2002.009.042	S3A1/SP4	20	40X36	18.6	1.8	21.9	4	12.5	26	GP 3
2002.010.042	S3.5A1/SP4	20	40X36	21.8	1.8	25.8	4.8	15.1	32	GP 3,5

PER POMPE CON ALBERO SCANALATO AD EVOLVENTE
FOR INVOLUTE SPLINED SHAFT PUMPS
FÜR PUMPEN MIT EVOLVENTEN PROFILWELLE



CODICE CODE BEST. NR	TIPO TYPE TYP	N° DENTI TEETH N° N° ZAHNEZ.	D1	N° DENTI TEETH N° N° ZAHNEZ.	D2	L1 mm	L2 mm	C1 DIN 471
2002.011.042	S2/13	18	35X31	13	16/32"DP	35	--	E.34
2002.012.042	S2/15	18	35X31	15	16/32"DP	40	--	E.34
2002.013.042	S4/13	20	40X36	13	16/32"DP	35	--	E.40
2002.034.042		24	50X45	9	16/32"DP	48	10	E.50
2002.038.042		24	50X45	13	16/32"DP	40	12	E.50
2002.033.042		24	50X45	15	16/32"DP	40	13	E.50
2002.039.042		24	50X45	21	16/32"DP	48	10	E.50
2002.032.042		24	50X45	23	16/32"DP	48	10	E.50
2002.040.042		24	50X45	14	12/24"DP	48	10	E.50

